

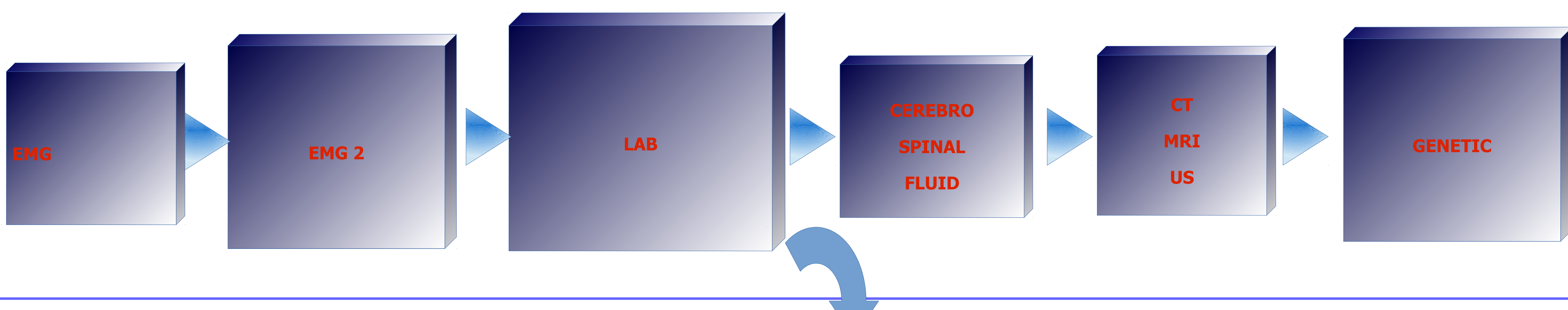
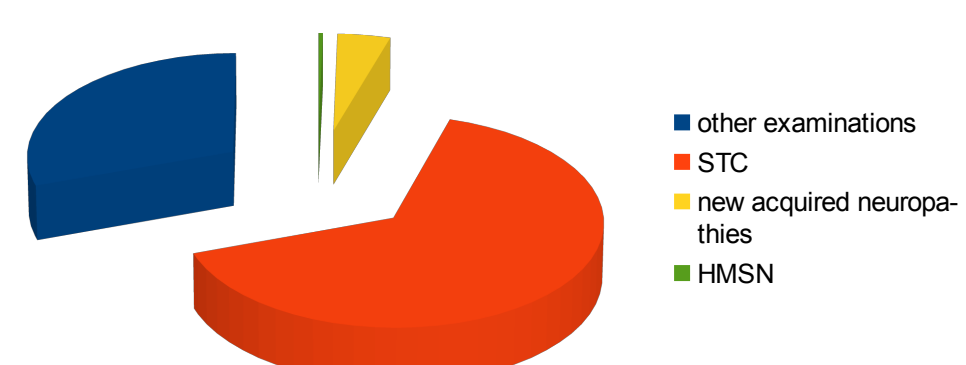
DIAGNOSTIC-THERAPEUTIC PATHWAY (PDTA) IN OUR NEUROPHYSIOLOGICAL

OUTPATIENT CLINIC: RATE OF HEREDITARY NEUROPATHIES IN A FIRST LEVEL HOSPITAL

LELLI S., MD; REPICE R., MD; MACCARRONE G., MD; MINACAPILLA A., NPT; PORCELLI G., NPT; PRESTERA S., NPT; SACCHETTO M., NPT; ROSSO T. MD.
Neurology-ULSS 8, Castelfranco Veneto, Italy

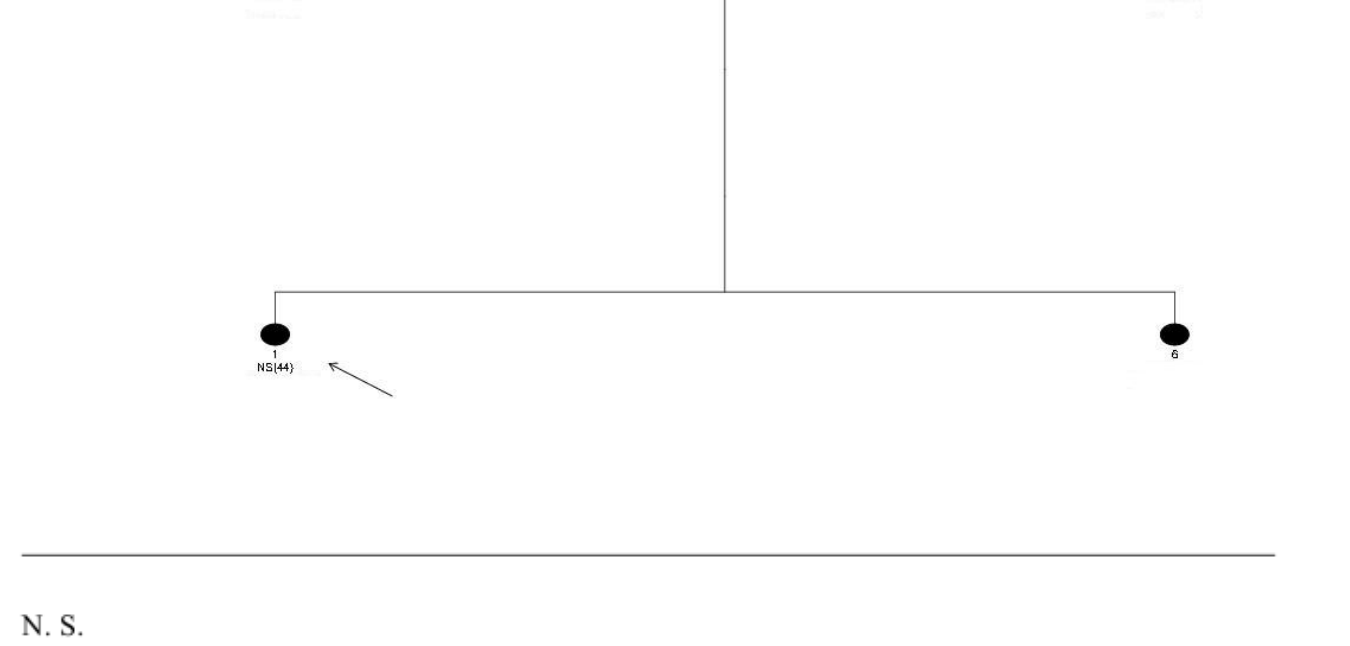
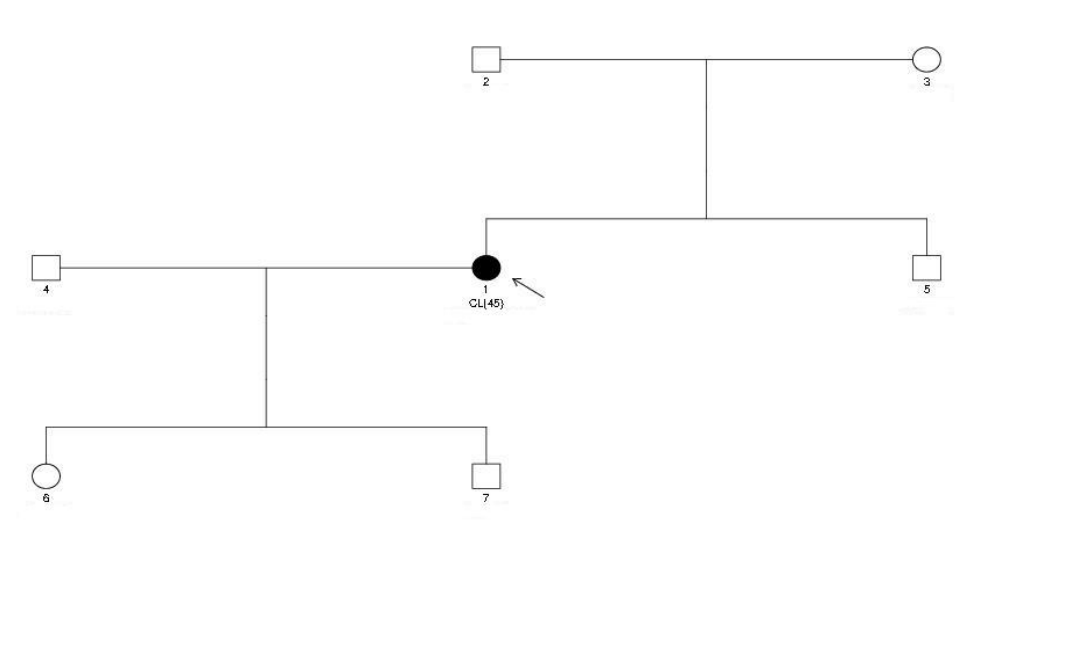
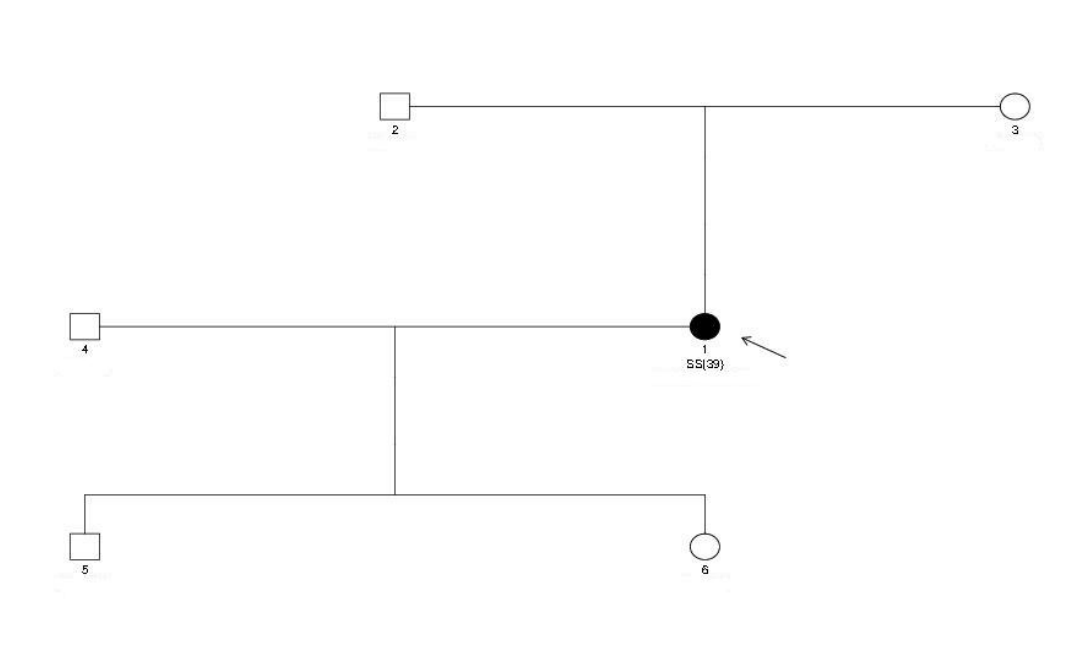
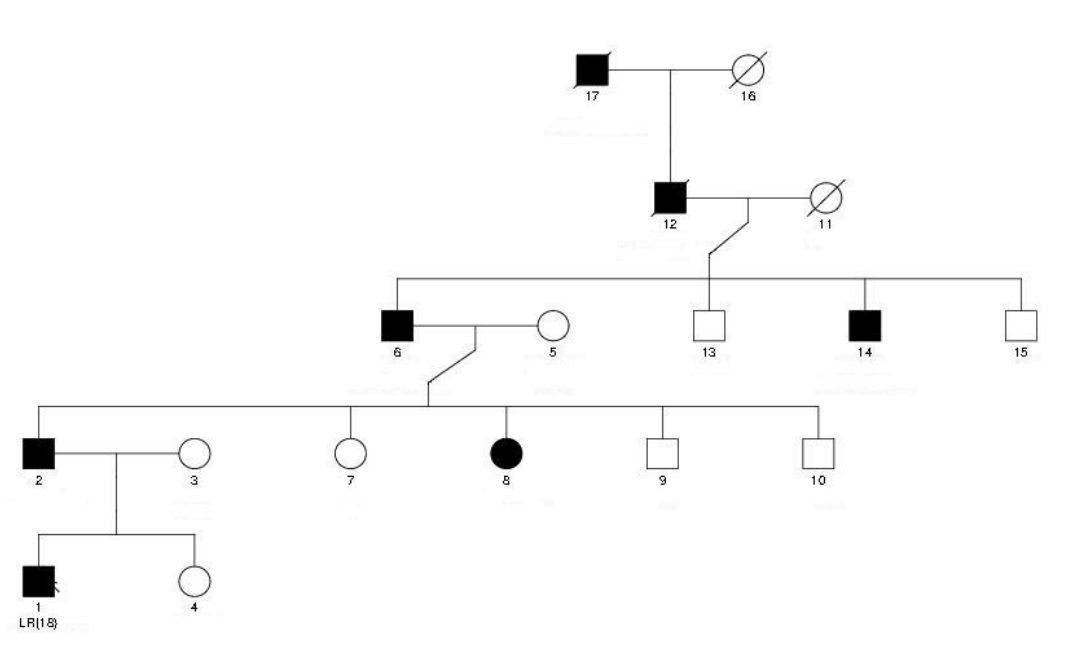
CMT is the most common heterogeneous group of inherited peripheral nerve disorders caused by a growing plethora of genetic mutations, affecting both the motor and the sensory nerves, that may bring an amount of physical disability. Clinical phenotypes change according to the age of onset and the most remarkable neurophysiological data, but there's a broad overlap with the acquired neuropathies that must be excluded before approaching the genetic testing.

In our first level-'spoke' hospital, stakeholders' interest on Neurophysiology has been developed in the last 2 years to perform quickly ever-growing requests, especially because of the most widespread nerve entrapment syndrome, the carpal tunnel syndrome (CTS). A specific outpatient clinic has been reorganized to admit patients from general practitioners and specialists. A neurophysiology technician and a neurologist performed 4200 exams: among them about 65% were CTS, but 195 were admitted to the neuropathic outpatient clinic for a new diagnosis of neuropathy and we found 16 patients (8%) probably affected by hereditary sensory-motor neuropathy (Charcot Marie-Tooth): the mutations have already been identified in 4 of them (3 HNPP, 1 CMT1B), haven't been found yet in other 9 of them and further 3 patients denied genetic counselling.



Index patient	Address	Birthdate year	Genotype/Phenotype correlation	Clinical data	Motor median	Motor ulnar/below elbow	Motor ulnar/above elbow	Sensory median	Sensory ulnar
L.B. CORNUDA	1968	HNPP/PMG2 del 2	SPF, palsy, foot deformity, scoliosis, incontinence, polyuria	DL: 5.4, Amp: 5.4, MCV: 51, 5.3, 8.2, 7.4, 7.4, 22, 4.3, 7, 10, 3.6, 10, 33	5.4, 5.4, 51, 5.3, 8.2, 7.4, 7.4, 22, 4.3, 7, 10, 3.6, 10, 33	5.4, 5.4, 51, 5.3, 8.2, 7.4, 7.4, 22, 4.3, 7, 10, 3.6, 10, 33	5.4, 5.4, 51, 5.3, 8.2, 7.4, 7.4, 22, 4.3, 7, 10, 3.6, 10, 33	5.4, 5.4, 51, 5.3, 8.2, 7.4, 7.4, 22, 4.3, 7, 10, 3.6, 10, 33	5.4, 5.4, 51, 5.3, 8.2, 7.4, 7.4, 22, 4.3, 7, 10, 3.6, 10, 33
S.S. CORNUDA	1977	HNPP/PMG2 del 2	Distal sensorimotor polyneuropathy	DL: 5.5, Amp: 5.5, MCV: 43, 3.6, 8.3, 4.3, 4.3, 5, 29, 3.5, 7, 39	5.5, 5.5, 43, 3.6, 8.3, 4.3, 4.3, 5, 29, 3.5, 7, 39	5.5, 5.5, 43, 3.6, 8.3, 4.3, 4.3, 5, 29, 3.5, 7, 39	5.5, 5.5, 43, 3.6, 8.3, 4.3, 4.3, 5, 29, 3.5, 7, 39	5.5, 5.5, 43, 3.6, 8.3, 4.3, 4.3, 5, 29, 3.5, 7, 39	5.5, 5.5, 43, 3.6, 8.3, 4.3, 4.3, 5, 29, 3.5, 7, 39
C.L. CASTELLO DE GOREGGIO	1971	HNPP/PMG2 del 2	Suspected CTS	DL: 12.1, Amp: 2.4, MCV: 44, 5.6, 8.3, 5.4, 6.3, 29, NR, NR, NR, NR, NR, NR	12.1, 2.4, 44, 5.6, 8.3, 5.4, 6.3, 29, NR, NR, NR, NR, NR, NR	12.1, 2.4, 44, 5.6, 8.3, 5.4, 6.3, 29, NR, NR, NR, NR, NR, NR	12.1, 2.4, 44, 5.6, 8.3, 5.4, 6.3, 29, NR, NR, NR, NR, NR, NR	12.1, 2.4, 44, 5.6, 8.3, 5.4, 6.3, 29, NR, NR, NR, NR, NR, NR	12.1, 2.4, 44, 5.6, 8.3, 5.4, 6.3, 29, NR, NR, NR, NR, NR, NR
N.S. RESANA	1972	CMT1B/PMG2 del 2	Suspected CTS, previous genetic diagnosis (2000 Mendel)	DL: 12.1, Amp: 3.8, MCV: 33.1, 2.9, 6.4, 3.2, 4.3, 34.2, NR, NR, NR, 3.3, 1.4, 36.4	12.1, 3.8, 33.1, 2.9, 6.4, 3.2, 4.3, 34.2, NR, NR, NR, 3.3, 1.4, 36.4	12.1, 3.8, 33.1, 2.9, 6.4, 3.2, 4.3, 34.2, NR, NR, NR, 3.3, 1.4, 36.4	12.1, 3.8, 33.1, 2.9, 6.4, 3.2, 4.3, 34.2, NR, NR, NR, 3.3, 1.4, 36.4	12.1, 3.8, 33.1, 2.9, 6.4, 3.2, 4.3, 34.2, NR, NR, NR, 3.3, 1.4, 36.4	12.1, 3.8, 33.1, 2.9, 6.4, 3.2, 4.3, 34.2, NR, NR, NR, 3.3, 1.4, 36.4
M.F. POVE DEL GRAPPA	1957	CMT1B/PMG2 del 2	peroneal palsy, foot deformity, scoliosis, incontinence, polyuria	DL: 4.3, Amp: 18.2, MCV: 50, 2.8, 13.8, 46, 2, 13.1, 38, 4.5, 3.6, 37.4, 3, 5.4, 53.3	4.3, 18.2, 50, 2.8, 13.8, 46, 2, 13.1, 38, 4.5, 3.6, 37.4, 3, 5.4, 53.3	4.3, 18.2, 50, 2.8, 13.8, 46, 2, 13.1, 38, 4.5, 3.6, 37.4, 3, 5.4, 53.3	4.3, 18.2, 50, 2.8, 13.8, 46, 2, 13.1, 38, 4.5, 3.6, 37.4, 3, 5.4, 53.3	4.3, 18.2, 50, 2.8, 13.8, 46, 2, 13.1, 38, 4.5, 3.6, 37.4, 3, 5.4, 53.3	4.3, 18.2, 50, 2.8, 13.8, 46, 2, 13.1, 38, 4.5, 3.6, 37.4, 3, 5.4, 53.3
L.F. MONTEBELLINA	1940	waiting	peroneal palsy, foot deformity, scoliosis, incontinence, polyuria	DL: 5.2, Amp: 4.7, MCV: 43, 3, 8.5, 46, 2, 13.1, 38, 4.5, 3.6, 37.4, 3, 5.4, 53.3	5.2, 4.7, 43, 3, 8.5, 46, 2, 13.1, 38, 4.5, 3.6, 37.4, 3, 5.4, 53.3	5.2, 4.7, 43, 3, 8.5, 46, 2, 13.1, 38, 4.5, 3.6, 37.4, 3, 5.4, 53.3	5.2, 4.7, 43, 3, 8.5, 46, 2, 13.1, 38, 4.5, 3.6, 37.4, 3, 5.4, 53.3	5.2, 4.7, 43, 3, 8.5, 46, 2, 13.1, 38, 4.5, 3.6, 37.4, 3, 5.4, 53.3	5.2, 4.7, 43, 3, 8.5, 46, 2, 13.1, 38, 4.5, 3.6, 37.4, 3, 5.4, 53.3
C.E. VIDOR	1941	waiting	peroneal palsy, foot deformity, scoliosis, incontinence, polyuria	DL: 4.4, Amp: 6.1, MCV: 61, 2.7, 2.8, 66, 27.3, 34, 2.8, 12, 52, 2.5, 10, 55	4.4, 6.1, 61, 2.7, 2.8, 66, 27.3, 34, 2.8, 12, 52, 2.5, 10, 55	4.4, 6.1, 61, 2.7, 2.8, 66, 27.3, 34, 2.8, 12, 52, 2.5, 10, 55	4.4, 6.1, 61, 2.7, 2.8, 66, 27.3, 34, 2.8, 12, 52, 2.5, 10, 55	4.4, 6.1, 61, 2.7, 2.8, 66, 27.3, 34, 2.8, 12, 52, 2.5, 10, 55	4.4, 6.1, 61, 2.7, 2.8, 66, 27.3, 34, 2.8, 12, 52, 2.5, 10, 55
B.N. BOSCO DEL GRAPPA	1947	waiting	peroneal palsy, foot deformity, scoliosis, incontinence, polyuria	DL: 3.8, Amp: 13.7, MCV: 29, 3.1, 6.2, NR, 4.2, 29.3, NR, 11.5, 41.2, NR, NR, NR, NR	3.8, 13.7, 29, 3.1, 6.2, NR, 4.2, 29.3, NR, 11.5, 41.2, NR, NR, NR, NR	3.8, 13.7, 29, 3.1, 6.2, NR, 4.2, 29.3, NR, 11.5, 41.2, NR, NR, NR, NR	3.8, 13.7, 29, 3.1, 6.2, NR, 4.2, 29.3, NR, 11.5, 41.2, NR, NR, NR, NR	3.8, 13.7, 29, 3.1, 6.2, NR, 4.2, 29.3, NR, 11.5, 41.2, NR, NR, NR, NR	3.8, 13.7, 29, 3.1, 6.2, NR, 4.2, 29.3, NR, 11.5, 41.2, NR, NR, NR, NR
A.B. RESE PIO X	1952	waiting	peroneal palsy, foot deformity, scoliosis, incontinence, polyuria	DL: 5, Amp: 8.3, MCV: 44, 2.9, 7.6, 50, 2.5, 34, 31, 3.4, 23, 49, 2.8, 37, 46	5, 8.3, 44, 2.9, 7.6, 50, 2.5, 34, 31, 3.4, 23, 49, 2.8, 37, 46	5, 8.3, 44, 2.9, 7.6, 50, 2.5, 34, 31, 3.4, 23, 49, 2.8, 37, 46	5, 8.3, 44, 2.9, 7.6, 50, 2.5, 34, 31, 3.4, 23, 49, 2.8, 37, 46	5, 8.3, 44, 2.9, 7.6, 50, 2.5, 34, 31, 3.4, 23, 49, 2.8, 37, 46	5, 8.3, 44, 2.9, 7.6, 50, 2.5, 34, 31, 3.4, 23, 49, 2.8, 37, 46
S.M. CASTELLO DE GOREGGIO	1979	waiting	peroneal palsy, foot deformity, scoliosis, incontinence, polyuria	DL: 3.8, Amp: 8.3, MCV: 42, 2.5, 13.8, 55, 9.7, 19, 64, 3.7, 3, 52, 3, 2, 50	3.8, 8.3, 42, 2.5, 13.8, 55, 9.7, 19, 64, 3.7, 3, 52, 3, 2, 50	3.8, 8.3, 42, 2.5, 13.8, 55, 9.7, 19, 64, 3.7, 3, 52, 3, 2, 50	3.8, 8.3, 42, 2.5, 13.8, 55, 9.7, 19, 64, 3.7, 3, 52, 3, 2, 50	3.8, 8.3, 42, 2.5, 13.8, 55, 9.7, 19, 64, 3.7, 3, 52, 3, 2, 50	3.8, 8.3, 42, 2.5, 13.8, 55, 9.7, 19, 64, 3.7, 3, 52, 3, 2, 50
B.S. CORNUDA	1944	waiting	peroneal palsy, foot deformity, scoliosis, incontinence, polyuria	DL: 3.4, Amp: 5.4, MCV: 46, 3.1, 8.5, 53, 3, 8.5, 61, 3.9, 27, 50, 2.6, 28, 54	3.4, 5.4, 46, 3.1, 8.5, 53, 3, 8.5, 61, 3.9, 27, 50, 2.6, 28, 54	3.4, 5.4, 46, 3.1, 8.5, 53, 3, 8.5, 61, 3.9, 27, 50, 2.6, 28, 54	3.4, 5.4, 46, 3.1, 8.5, 53, 3, 8.5, 61, 3.9, 27, 50, 2.6, 28, 54	3.4, 5.4, 46, 3.1, 8.5, 53, 3, 8.5, 61, 3.9, 27, 50, 2.6, 28, 54	3.4, 5.4, 46, 3.1, 8.5, 53, 3, 8.5, 61, 3.9, 27, 50, 2.6, 28, 54
M.C. LORNA	1989	waiting	peroneal palsy, foot deformity, scoliosis, incontinence, polyuria	DL: 3.3, Amp: 11.3, MCV: 53, 2.9, 6.3, 46, 5.6, 54, 3.3, 58, 190, 2, 47, 61	3.3, 11.3, 53, 2.9, 6.3, 46, 5.6, 54, 3.3, 58, 190, 2, 47, 61	3.3, 11.3, 53, 2.9, 6.3, 46, 5.6, 54, 3.3, 58, 190, 2, 47, 61	3.3, 11.3, 53, 2.9, 6.3, 46, 5.6, 54, 3.3, 58, 190, 2, 47, 61	3.3, 11.3, 53, 2.9, 6.3, 46, 5.6, 54, 3.3, 58, 190, 2, 47, 61	3.3, 11.3, 53, 2.9, 6.3, 46, 5.6, 54, 3.3, 58, 190, 2, 47, 61
L.L. CASTELFRANCO VENETO	1947	waiting	peroneal palsy, foot deformity, scoliosis, incontinence, polyuria	DL: 4.1, Amp: 7.8, MCV: 55, 4.5, 7.7, 61, 3.5, 34, 36, 3.3, 4, 36, 3.7, 8, 33	4.1, 7.8, 55, 4.5, 7.7, 61, 3.5, 34, 36, 3.3, 4, 36, 3.7, 8, 33	4.1, 7.8, 55, 4.5, 7.7, 61, 3.5, 34, 36, 3.3, 4, 36, 3.7, 8, 33	4.1, 7.8, 55, 4.5, 7.7, 61, 3.5, 34, 36, 3.3, 4, 36, 3.7, 8, 33	4.1, 7.8, 55, 4.5, 7.7, 61, 3.5, 34, 36, 3.3, 4, 36, 3.7, 8, 33	4.1, 7.8, 55, 4.5, 7.7, 61, 3.5, 34, 36, 3.3, 4, 36, 3.7, 8, 33
G.A. RESANA	1941	lost at Fup/denied	peroneal palsy, foot deformity, scoliosis, incontinence, polyuria	DL: 5.1, Amp: 3.7, MCV: 48, 3.2, 7.3, 50.5, 4.8, 40.7, 8.7, 5.5, 43.8, 3, 5.3, 42.4	5.1, 3.7, 48, 3.2, 7.3, 50.5, 4.8, 40.7, 8.7, 5.5, 43.8, 3, 5.3, 42.4	5.1, 3.7, 48, 3.2, 7.3, 50.5, 4.8, 40.7, 8.7, 5.5, 43.8, 3, 5.3, 42.4	5.1, 3.7, 48, 3.2, 7.3, 50.5, 4.8, 40.7, 8.7, 5.5, 43.8, 3, 5.3, 42.4	5.1, 3.7, 48, 3.2, 7.3, 50.5, 4.8, 40.7, 8.7, 5.5, 43.8, 3, 5.3, 42.4	5.1, 3.7, 48, 3.2, 7.3, 50.5, 4.8, 40.7, 8.7, 5.5, 43.8, 3, 5.3, 42.4
R.P. MONTEBELLINA	1941	lost at Fup/denied	peroneal palsy, foot deformity, scoliosis, incontinence, polyuria	DL: 5.4, Amp: 6.5, MCV: 53.1, 3.05, 10.9, 54.5, 9.5, 51.4, 4.4, 4.8, 26.7, 13.8, 11.3, 40.7	5.4, 6.5, 53.1, 3.05, 10.9, 54.5, 9.5, 51.4, 4.4, 4.8, 26.7, 13.8, 11.3, 40.7	5.4, 6.5, 53.1, 3.05, 10.9, 54.5, 9.5, 51.4, 4.4, 4.8, 26.7, 13.8, 11.3, 40.7	5.4, 6.5, 53.1, 3.05, 10.9, 54.5, 9.5, 51.4, 4.4, 4.8, 26.7, 13.8, 11.3, 40.7	5.4, 6.5, 53.1, 3.05, 10.9, 54.5, 9.5, 51.4, 4.4, 4.8, 26.7, 13.8, 11.3, 40.7	5.4, 6.5, 53.1, 3.05, 10.9, 54.5, 9.5, 51.4, 4.4, 4.8, 26.7, 13.8, 11.3, 40.7
T.B. CASTELFRANCO VENETO	1989	denied	peroneal palsy, foot deformity, scoliosis, incontinence, polyuria	DL: NR, NR, NR, NR, NR, NR, NR, NR, NR, NR, NR, NR, NR, NR	NR, NR, NR, NR, NR, NR, NR, NR, NR, NR, NR, NR, NR, NR	NR, NR, NR, NR, NR, NR, NR, NR, NR, NR, NR, NR, NR, NR	NR, NR, NR, NR, NR, NR, NR, NR, NR, NR, NR, NR, NR, NR	NR, NR, NR, NR, NR, NR, NR, NR, NR, NR, NR, NR, NR, NR	NR, NR, NR, NR, NR, NR, NR, NR, NR, NR, NR, NR, NR, NR

ROUTINE	INFLAMMATORY	PARANEOPLASTIC	INFECTIOUS
THORAX XR	ESV, RCP	CA125, CA72-4, CA15-3, CA19-9, CEA	HBV, HCV
Haemocrom, Glucose, urea, creatinine, Na, K, Ca, GGT, ALT, AST, TSH, FT3, FT4	Ab antiDNA, ENA, ANA, ANCA, CIC, C3, C4, C1Q, CRIOGLOBULINS	AFP	VDRL
B12, FOLATE	Ab anti-GANGLIOSIDES	PSA	HIV
PROTEIN and IG PROFILE	Ab anti-MAG	BETA2 MICROGLOBULIN	CMV, EBV
CK, LDH, ALDOLASE, LACTATE, MYOGLOBULIN			Borrelia Burgdorferi



Motor Nerve Conduction:

Nerve and Site	Latency	Amplitude	Segment	Latency Difference	Distance	Conduction Velocity
L Median						
Wrist	5.4 ms	9.6 mV	Abductor pollicis brevis-Wr	5.4 ms	mm	m/s
Elbow	10.1 ms	9.7 mV	Wrist-Elbow	4.7 ms	240 mm	51 m/s
Axilla	12.5 ms	9.1 mV	Elbow-Axilla	2.4 ms	130 mm	54 m/s
R Ulnar						
Wrist	3.3 ms	8.5 mV	Abductor digiti minimi (innerv) Wrist	3.3 ms	mm	m/s
Below elbow	7.9 ms	7.4 mV	Wrist-Below elbow	4.6 ms	220 mm	48 m/s
Above elbow	13.0 ms	7.5 mV	Below elbow-Above elbow	5.1 ms	110 mm	22 m/s

S.S.

Motor Nerve Conduction:

Nerve and Site	Latency	Amplitude	Segment	Latency Difference	Distance	Conduction Velocity
R Median						
Wrist	5.5 ms	6.1 mV	Abductor pollicis brevis-Wrist	5.5 ms	mm	m/s
Elbow	10.8 ms	5.7 mV	Wrist-Elbow	5.3 ms	250 mm	43 m/s
Axilla	15.6 ms	5.4 mV	Elbow-Axilla	4.8 ms	210 mm	45 m/s
R Ulnar						
Wrist	3.6 ms	8.3 mV	Abductor digiti minimi (innerv) Wrist	3.6 ms	mm	m/s
Below elbow	9.8 ms	6.9 mV	Wrist-Below elbow	6.2 ms	200 mm	41 m/s
Above elbow	12.9 ms	5.2 mV	Below elbow-Above elbow	3.9 ms	120 mm	31 m/s

C.L.

Motor Nerve Conduction:

Nerve and Site	Latency	Amplitude	Segment	Latency Difference	Distance	Conduction Velocity
L Median						
Wrist	12.1 ms	7.4 mV	Abductor pollicis brevis-Wrist	12.1 ms	mm	m/s
Elbow	16.9 ms	8.5 mV	Wrist-Elbow	4.8 ms	210 mm	44 m/s
Axilla	19.3 ms	10.2 mV	Elbow-Axilla	2.4 ms	125 mm	52 m/s
L Ulnar						
Wrist	5.6 ms	8.2 mV	Abductor digiti minimi (innerv) Wrist	5.6 ms	mm	m/s
Below elbow	9.1 ms	6.9 mV	Wrist-Below elbow	3.5 ms	190 mm	54 m/s
Above elbow	13.3 ms	6.4 mV	Below elbow-Above elbow	4.2 ms	120 mm	29 m/s

N. S.

Motor NCS

Nervo / Posizioni	Latency ms	Amp-p-p μV	Distanza cm	Velocità m/s	Pos. reg
D MEDIAN - APB					
Polso	12,10	3,8			ABP
Gomito	18,75	2,8	22	33,1	ABP
D ULNAR - ADM					
Polso	2,90	6,0			ADM
Scottogomito	9,45	4,1	21,5	32,8	ADM
Sopragomito	12,35	4,6	10,5	36,2	ADM

Sensory NCS

Nervo / Posizioni	Site reg.	Amp-p-p μV	Latenza ms	Distanza cm	Velocità m/s	Amp-1-2 pV
D NERVO GENERALE - Mano Antidromica						
Polso	I dito med	11,2	4,00	15,5	38,8	5,3
Polso	I dito med					NR
Polso	III dito med					NR
Polso	V dito uln	18,0	3,30	12	36,4	14,0

